



www.SMIadviser.org

An APA and SAMHSA Initiative



Welcome to your quarterly update from SMI Adviser. We continue our commitment to advance evidence-based care for individuals who have serious mental illness (SMI).

Our last update in Fall 2020 noted a significant upcoming milestone: the launch of SMI Adviser's virtual conference on first-episode psychosis. We are proud to present a recap on that event and the interprofessional audience that it served. This successful event was simply the starting point for several months of work that brought to market exciting new education and resources on SMI.

Since last Fall we continued to create new resources in response to needs we heard from the field, with guidance from our national clinical experts. SMI Adviser also collaborated with external experts and organizations to develop new tools that leverage their knowledge and experience. Our new resources include:

- ✓ A guide that provides an overview of considerations, assessment, and safety planning for suicide prevention
- ✓ Infographics that debunk common myths around SMI related to psychopharmacology and technology
- ✓ A regular series of free live webinars and on-demand courses that offer continuing education for social workers
- ✓ Infographics that present data on SMI in terms of economic impact, treatment access, barriers to care, and more

You have a role too. Help spread the word about these evidence-based resources. Visit our [Partner Action Toolkit](#) to find all of our materials. Share with your colleagues and help us raise awareness.

Thank you for being an important part of this initiative.

For questions about SMI Adviser, please contact us at [SMIAdviser@psych.org](mailto:SMIAdviser@psych.org). Our team is here to help you.

## A BETTER TOMORROW

Find answers that help people with serious mental illness live their best lives.



**Clinicians  
& Providers**



**Individuals  
& Families**

### GRANT STATEMENT

Funding for this initiative was made possible (in part) by Grant No. SM080818 from SAMHSA. The views expressed in written conference materials or publications and by speakers and moderators do not necessarily reflect the official policies of the Department of Health and Human Services; nor does mention of trade names, commercial practices, or organizations imply endorsement by the U.S. Government.



www.SMIadviser.org

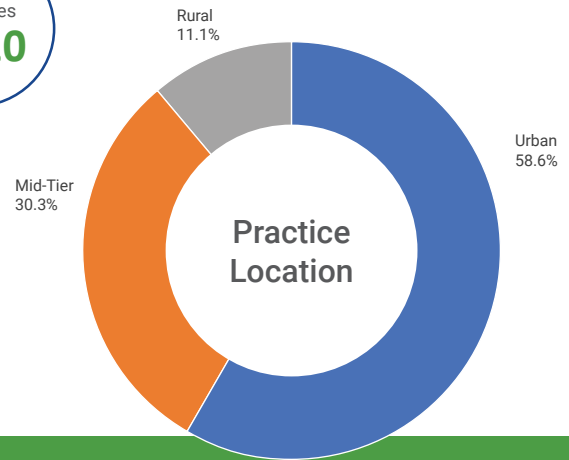
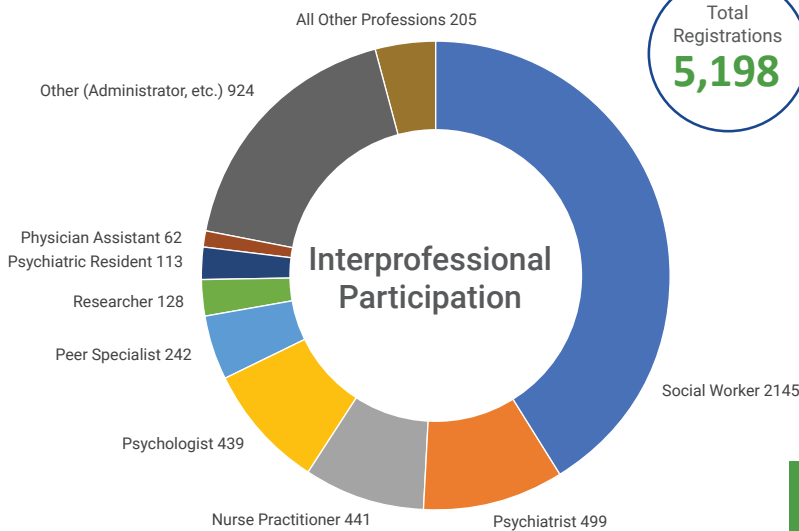
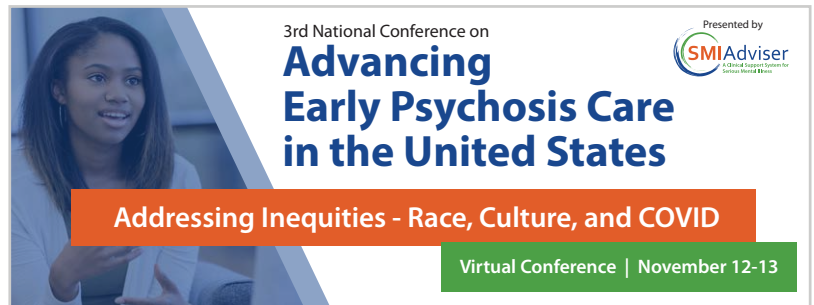
An APA and SAMHSA Initiative



## A Successful Virtual Conference Launch

SMI Adviser works closely with the Psychosis-Risk and Early Psychosis Program Network (PEPPNET) to create evidence-based education and resources on first-episode psychosis. This collaboration includes ongoing webinars and, in November 2020, the successful launch of the 3rd National Conference on Advancing Early Psychosis Care in the United States.

SMI Adviser presented the virtual conference with expert consultation from PEPPNET and The National Institute of Mental Health. The theme was Addressing Inequities: Race, Culture, and COVID. Over two days, the conference included 20 sessions and offered CME/CE credit for physicians, psychologists, and social workers.



Attendance 7x Higher Than 2019

### Top 10 States with Attendees

- ✓ California
- ✓ New York
- ✓ Texas
- ✓ Massachusetts
- ✓ Pennsylvania
- ✓ Virginia
- ✓ Maryland
- ✓ Florida
- ✓ North Carolina
- ✓ Ohio

"Superb presentation. So much that I can use to validate, enlighten and guide us on an individual, team, agency, and system level." -- Peer Specialist

"Enlightening and refreshingly positive coping skills for managing virtual teams during the pandemic." -- Psychologist

"Amazing training, one of the best trainings I've attended in years." -- Social Worker



www.SMIadviser.org

An APA and SAMHSA Initiative



## Participate in Virtual Conference On-Demand Sessions

Popular sessions from the 3rd National Conference on Advancing Early Psychosis Care in the United States are available for on-demand participation on the SMI Adviser website.

These free sessions provide valuable, evidence-based guidance and feature dozens of national experts in culturally informed care, workforce best practices, psychopharmacology, and much more.

The collage includes the following session cards:

- Culture of Mental Illness: Sensemaking of Psychosis and Recovery** (CME: 1 Psychology CE: 1, Social Work CE: 1 Participation: 1)
- Race, Culture, and Diagnosis of Psychosis** (CME: 1 Psychology CE: 1, Social Work CE: 1 Participation: 1)
- Providing Crisis and Assessment Services Remotely** (CME: 1 Psychology CE: 1, Social Work CE: 1 Participation: 1)
- Rural and Frontier CSC Considerations to Address Trauma and Race** (CME: 1 Psychology CE: 1, Social Work CE: 1 Participation: 1)



**Free Physician CME**

**Free Psychology CE**

**Free Social Work CE**

Here is a sample list of sessions:

- ✓ Can We Create Sustainability of Coordinated Specialty Care (CSC)?
- ✓ Cultural and Contextual Considerations in the Early Identification of Risk for Psychosis
- ✓ Culture of Mental Illness: Sensemaking of Psychosis and Recovery
- ✓ Providing Crisis and Assessment Services Remotely
- ✓ Race, Culture, and Diagnosis of Psychosis
- ✓ Rural and Frontier CSC Considerations to Address Trauma and Race
- ✓ Towards an Inclusive Practice: Creating Safe Spaces in Supervision and Interprofessional Teams to Address Inequities and Optimize the Delivery of Behavioral Health Services

**PARTICIPATE IN THE SESSIONS**

**Join our #MissionForBetter at SMIadviser.org**



www.SMIadviser.org

An APA and SAMHSA Initiative



## Our Clinical Expert Team Welcomes a New Member



SMI Adviser welcomes Dana Foglesong, MSW, as the SMI Recovery Expert on our Clinical Expert Team.

Dana is the Board President of the National Association of Peer Supporters. She served as director of recovery and resiliency services for Magellan Complete Care of Florida and has been a Certified Recovery Peer Specialist in Florida since 2010. Before joining Magellan, she worked for the Florida Department of Children and Families in the Office of Substance Abuse and Mental Health.



## Have Questions About How Peer Specialists Can Support Recovery?

Submit your questions about SMI and receive a clinician-to-clinician consultation from our Clinical Expert Team.

One of our national experts can respond to you within one business day with evidence-based answers on:

- ✓ COVID-19 and SMI
- ✓ Family engagement
- ✓ Health system issues
- ✓ Nursing
- ✓ Peer support
- ✓ Psychopharmacology
- ✓ Recovery
- ✓ Social work
- ✓ Technology
- ✓ And much more!

[SUBMIT A QUESTION NOW](#)

## New Guide on Suicide and SMI



People who live with SMI—such as major depression, bipolar disorder, and schizophrenia—are at increased risk of suicide. It is critical to understand the problem of suicide for those who have SMI. That is the only way to create a comprehensive, effective suicide prevention plan.

SMI Adviser and the Suicide Prevention Resource Center (SPRC) are proud to present a new guide on *Suicide and Serious Mental Illness*. It is an ideal resource for both suicide prevention coordinators and mental health clinicians. The guide provides an overview of considerations and suicide prevention measures at the intersection of suicide and SMI.

[DOWNLOAD THE GUIDE](#)



www.SMIadviser.org

An APA and SAMHSA Initiative



## Sessions Highlight SMI Adviser During the Upcoming 2021 APA Annual Meeting

If you attend the 2021 APA Annual Meeting, plan to find SMI Adviser on the agenda. Look for the sessions below to hear members of our Clinical Expert Team present alongside other leaders in mental health. These are live sessions that provide opportunities to ask questions about SMI!

This year the APA Annual Meeting addresses topics that include diversity and health; global, political, and social issues; community psychiatry; technology; and much more.

AMERICAN  
PSYCHIATRIC  
ASSOCIATION  
**ANNUAL MEETING**  
May 1-3, 2021 • Online



**REGISTER FOR THE ANNUAL MEETING**

### **Educating and Supporting the Mental Health Workforce** Saturday, May 1, 2021 | 11:30 am – 1:00 pm EST

#### Presenters



**Humberto Carvalho, MPH**  
Public Health Advisor  
Project Officer, SAMHSA



**Amy N. Cohen, PhD**  
Project Director  
American Psychiatric Association  
SMI Psychological Treatment Expert  
SMI Adviser



**Anita Everett, MD**  
Director, Center for Mental Health  
Services (CMHS), SAMHSA



**Tristan Gorrindo, MD**  
Deputy Medical Director  
American Psychiatric Association  
Principal Investigator  
SMI Adviser



**Heather Gotham, PhD**  
Director, Mental Health  
Technology Transfer Center

### **Harnessing Digital Technology to Bring About Long-Term Recovery in First-Episode Psychosis** Saturday, May 1, 2021 | 4:00 pm – 5:30 pm EST

#### Panelists



**Mario Alvarez-Jimenez, PhD, D.Clin.Psy.**  
Director, Orygen Digital,  
Orygen, Center for Youth Mental Health,  
The University of Melbourne



**Tristan Gorrindo, MD**  
Deputy Medical Director  
American Psychiatric Association  
Principal Investigator  
SMI Adviser



**John Torous, MD, MBI**  
Director, Digital Psychiatry Division  
Beth Israel Deaconess Medical Center  
SMI Technology Expert  
SMI Adviser

### **Three New Tools to Augment Care for People with SMI** Monday, May 3, 2021 | 2:00 pm – 3:30 pm EST

#### Presenters



**Amy N. Cohen, PhD**  
Project Director  
American Psychiatric Association  
SMI Psychological Treatment Expert  
SMI Adviser



**Tristan Gorrindo, MD**  
Deputy Medical Director  
American Psychiatric Association  
Principal Investigator  
SMI Adviser



**Sherin Khan, LCSW**  
Director of Workforce Development  
Thresholds  
SMI Social Work Expert  
SMI Adviser



**John Torous, MD, MBI**  
Director, Digital Psychiatry Division  
Beth Israel Deaconess Medical Center  
SMI Technology Expert  
SMI Adviser



www.SMIadviser.org

An APA and SAMHSA Initiative



## Do You Know the Latest Data on SMI?

The latest data clearly shows how SMI is a significant public health concern in the U.S. However, the data is not always easy to find for busy clinicians, administrators, and policymakers.

That is why SMI Adviser offers a new series of resources that provides key statistics on the impact of SMI. These data come from sources that include SAMHSA's 2019 National Survey on Drug Use and Health.

**13.1 million**  
adults have SMI

**3.6 million**  
adults have co-occurring  
SMI and a substance  
use disorder

**39.6%**  
of individuals who have  
SMI are unemployed or  
not in the workforce

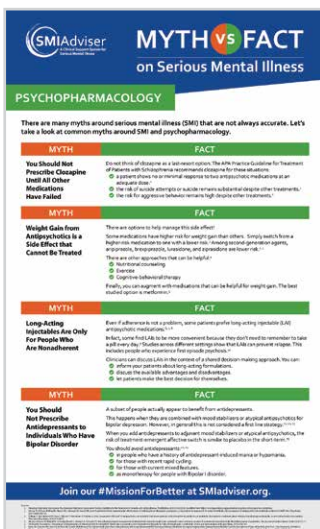
**34.5%**  
of individuals who  
have SMI receive  
no treatment

**ACCESS THESE FREE RESOURCES**

## Help Us Bust the Myths on SMI

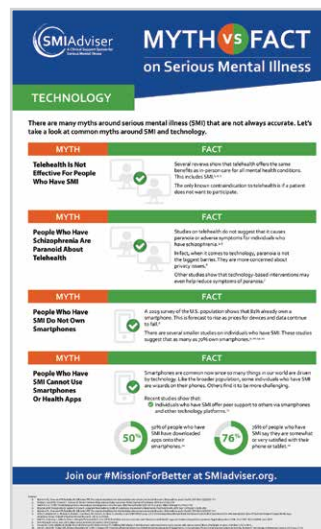
There are many myths around SMI that are not accurate. That is why SMI Adviser is creating new resources to set the record straight.

These infographics are the first in a series that look at myths versus facts on topics around SMI. They provide evidence-based answers that debunk common myths.



Common Myths Around SMI and Psychopharmacology

**DOWNLOAD INFOGRAPHIC ON PSYCHOPHARMACOLOGY**



Common Myths Around SMI and Technology

**DOWNLOAD INFOGRAPHIC ON TECHNOLOGY**



www.SMIadviser.org

An APA and SAMHSA Initiative



## Clozapine/Long-Acting Injectable Virtual Forum Creates Engagement

In 2020, in the midst of the pandemic clinicians began to value short, interactive learning formats. We adapted to that trend by launching the Clozapine/Long-Acting Injectable (LAI) Virtual Forum.

The Virtual Forum is an interactive discussion moderated by members of our Clinical Expert Team. It takes place on the first Wednesday of each month and focuses on a hot topic in the field around clozapine or long-acting injectables. There is no registration required – participants join an informal Zoom call and share challenges, questions, and ideas around that topic.

This new format is popular and the Virtual Forum has consistent engagement and interaction. It recently expanded to 45 minutes to address a growing number of attendees and questions.

### Virtual Forum Moderators



#### Robert Cotes, MD

Associate Professor, Department of Psychiatry and Behavioral Sciences, Emory University School of Medicine  
SMI Adviser Physician Expert



#### Donna Rolin, PhD, APRN

Clinical Associate Professor and Director, Psychiatric Mental Health Nurse Practitioner program  
University of Texas, Austin  
SMI Adviser Nursing Expert

### Recent Monthly Topics

- ✓ Long-Acting Injectable Antipsychotics (LAIs) During COVID-19
- ✓ Clozapine Titrations: New Starts & Re-Titrating After Treatment Interruption
- ✓ Strategies for Managing Breakthrough Symptoms for Patients on LAIs
- ✓ Beyond Clozapine: Pharmacologic and Psychosocial Strategies for a Partial Clozapine Response

### Why Participate?

- ✓ Short Learning Format
- ✓ Interactive, Peer-to-Peer Discussions
- ✓ Focus on Hot Topics
- ✓ Actionable Insights for Real-World Practice

### How to Sign Up

Join the Clozapine and LAI Centers of Excellence Exchange listserv to get monthly invites for the Virtual Forum.



**SIGN UP NOW**



www.SMIadviser.org

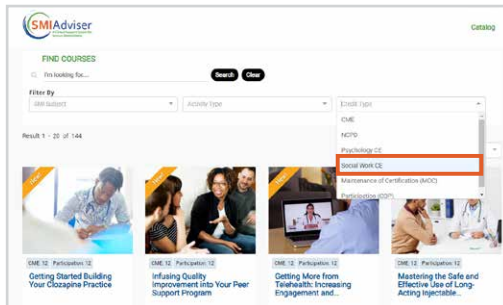
An APA and SAMHSA Initiative



## Attention Social Workers: Earn Free Continuing Education Credits

The SMI Adviser course catalog now offers multiple on-demand courses that are certified for Social Work CE credits.

Social workers are a critical part of the interprofessional audience that SMI Adviser serves. Over the coming months, look for regular live and on-demand educational opportunities that offer Social Work CE credits.



### How to Find Your Courses

1. Visit <https://education.SMIadviser.org>
2. Go to the Credit Type dropdown menu and select Social Work CE

[SEE THESE COURSES NOW](#)

## Upcoming Webinar Series on Violence/Risk Assessment

Content on risk assessment and forensics is a topic of high interest among our colleagues across all mental health settings. That is why SMI Adviser presents an upcoming series of three webinars that dives in depth on these issues.

These webinars are led by renowned experts in the field: Debra Pinals, MD, Director, Program in Psychiatry, Law, and Ethics, and Clinical Professor of Psychiatry, University of Michigan Medical School; and Charles L. Scott, MD, Chief, Division of Psychiatry and the Law, Forensic Psychiatry Training Director, and Professor of Clinical Psychiatry, University of California, Davis Medical Center.



### Marijuana, SMI and Violence: Practical Guidance for Practitioners

A look at the relationship of cannabis use to violence with an emphasis on risk factors for aggression and violence in persons with SMI who use cannabis.



### A Clinician's Guide to Violence Risk Assessment in Persons with Serious Mental Illness

A general guide for mental health clinicians on violence risk assessment in individuals who have SMI.



### Rare but Real Risk of Firearms and Treatment of Individuals with Serious Mental Illness: Basic Principles for Practitioners

An in-depth review on firearms and mental illness with guidance on how to appropriately screen persons with SMI for a potential firearm-related risk of harm to themselves or someone else.

[SEE ALL UPCOMING COURSES](#)





www.SMIadviser.org

An APA and SAMHSA Initiative



## Use Our Partner Action Toolkit to Raise Awareness

Find logos, flyers, text for listservs, and any other materials you need to share with your colleagues, staff, individuals in your care, and more. Visit our Partner Action Toolkit and simply download the files you need.

Join our Mission for Better and help us promote the use of evidence-based care for individuals who have SMI. Post something on social media today and use our hashtag #MissionForBetter.



**SEE THE TOOLKIT**

## SAMHSA Partner Spotlight: Prevention Technology Transfer Center (PTTC)

*This section highlights other programs and resources from the Substance Abuse and Mental Health Services Administration (SAMHSA)*

The purpose of the PTTC Network is to improve implementation and delivery of effective substance use prevention interventions. This collaborative network offers training and technical assistance services, and develops and disseminates tools and strategies to improve the quality of substance use prevention efforts. The PTTC Network team provides intensive technical assistance and learning resources to prevention professionals to improve their understanding of prevention science, epidemiological data, and implementation of evidence-based and promising practices.

**LEARN MORE ABOUT THE PTTC**

