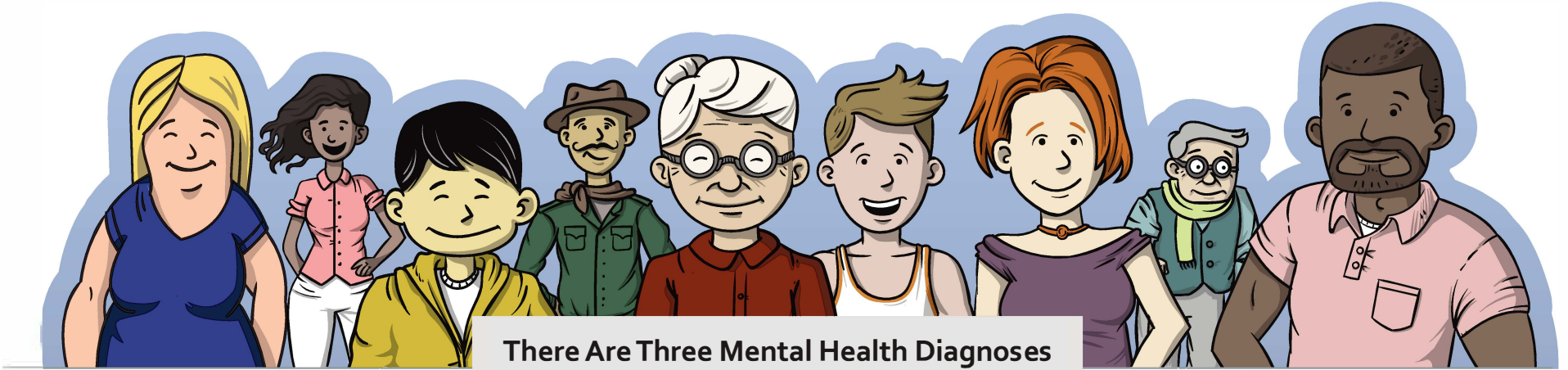


SERIOUS MENTAL ILLNESS (SMI)

WHAT / WHY / WHERE
is it? / does it matter? / can you turn?



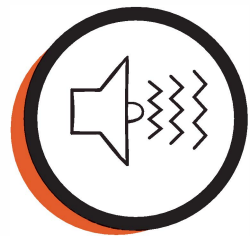
There Are Three Mental Health Diagnoses Most Commonly Associated With SMI



Bipolar Disorder



Major Depressive Disorder



Schizophrenia

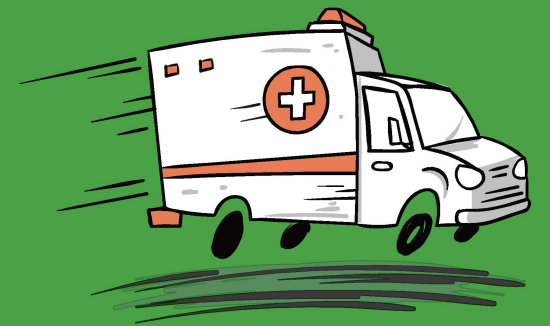


SMI is common

- 1 in 25 adults has SMI in a given year; that equals 4.2% of the U.S. population age 18 or older, or 10.4 million adults¹

Individuals who have SMI face a number of concerns

- An estimated 40% of adults with schizophrenia and 51% with severe bipolar disorder receive no treatment in any one-year period.²
- Only 36% have full-time employment¹
- Suicide rates are 20-25% higher than the general population^{3,4}
- 10 million+ visits to emergency departments annually⁵



Our Mission
 Advance the use of an evidence-based, person-centered approach to care

SMI Adviser is a FREE resource for **EVERYONE**



Mental Health Professionals

- Consultations from SMI Experts.
- CME/CNE/CE-Certified Education*
- Knowledge and Answers.



Individuals Receiving Care



Family Members



Anyone who has questions about SMI

Information and answers about SMI, treatments, recovery, and more

Join our #MissionForBetter at SMIadviser.org/better

Better clinical support. Better resources for families. Better care for people who have SMI.

Sources:

1. Center for Behavioral Health Statistics and Quality, 2017
2. National Institute of Mental Health
3. U.S. Dept. of Health and Human Services, 2012
4. Hor K, Taylor M.; Suicide and schizophrenia: a systematic review of rates and risk factors. J Psychopharmacol. 2010 Nov;24(4 Suppl):81-90.
5. Healthcare Cost and Utilization Project, 2014

*CNE and CE credit is only offered for select activities

Grant Statement:

Funding for this initiative was made possible (in part) by Grant No. 1H79SM080818-01 from SAMHSA. The views expressed in written conference materials or publications and by speakers and moderators do not necessarily reflect the official policies of the Department of Health and Human Services; nor does mention of trade names, commercial practices, or organizations imply endorsement by the U.S. Government.

Administered by



Funded by

