



[www.SMIadviser.org](http://www.SMIadviser.org)

An APA and SAMHSA Initiative



Welcome to your quarterly update from SMI Adviser. Our team worked hard over the summer and we are happy to tell you about that work in this newsletter. There is also some homework for YOU in this effort: Share information about SMI Adviser with your colleagues! It is critical for all individuals who have serious mental illness (SMI) to receive the best evidence-based care. The clinical experts on our team are ready to answer questions, help navigate clinical challenges, and enhance how you provide mental health care. Help us ensure that everyone takes advantage of our completely FREE education, resources, and consultations.

In case you were unable to attend our recent quarterly update call, you can [access the slides here](#).

Thank you for being an important part of this initiative and for all you do in your community.

For questions about SMI Adviser, please contact us at [SMIAdviser@psych.org](mailto:SMIAdviser@psych.org). Our team is here to help you.

## Upcoming Pre-Conference Event at IPS: The Mental Health Services Conference

SMI Adviser is proud to support a pre-conference event on October 2 in New York City during IPS: The Mental Health Services Conference. The event – National Conference on Advancing Early Psychosis Care – focuses on innovative clinical high risk (CHR) and early psychosis care. Presenters are experts in coordinated specialty care from the Psychosis-Risk and Early Psychosis Program Network (PEPPNET), the Substance Abuse and Mental Health Services Administration (SAMHSA), the National Institute of Mental Health (NIMH), and SMI Adviser. We invite all mental health professionals to register for this unique event.

The IPS conference, which takes place October 3-6, is the American Psychiatric Association's gathering for mental health clinicians in community settings. It is a valuable way to enhance your clinical practice through its 80+ sessions.

[LEARN ABOUT THIS EVENT](#)

[www.SMIadviser.org](http://www.SMIadviser.org)



www.SMIadviser.org

An APA and SAMHSA Initiative



## September is Suicide Prevention Month

The Zero Suicide framework is an evidence-informed bundle of practices and tools to support system-wide transformation toward safer suicide care. SMI Adviser is proud to invite you to an upcoming webinar on September 26 that provides an overview of this framework and its core elements.



### Webinar

Zero Suicide: Taking a Systems Approach to Suicide Prevention in Health Care

September 26, 2019  
3:00-4:00pm ET

Adam Chu, MPH, Education Development Center  
Kim Walton, MSN, APRN, Education Development Center

[REGISTER NOW](#)



www.SMIadviser.org

An APA and SAMHSA Initiative



## Using the Free SMI Adviser Consultation Service: A Primer, Part 1

One of the primary services that SMI Adviser offers is free consultations from national experts in SMI. Consultations are a valuable way to find the best answer to a challenging question or to reinforce your current approach to a common issue. **Here is a primer on how it works.**

### How to Use This Service



### Ideas on What to Ask About

- ✓ Medication selection, dosage, side effects, and long-term management
- ✓ Psychosocial treatment options
- ✓ Evidence-based practices and how to implement them in specific settings or scenarios
- ✓ Peer support: benefits, evidence, and best practices
- ✓ Clozapine: starting, adjusting dosage, blood testing, and managing side effects
- ✓ Any other topic related to serious mental illness!



www.SMIadviser.org

An APA and SAMHSA Initiative



## Using the Free SMI Adviser Consultation Service: A Primer, Part 2

It can be a challenge to use a new clinical tool even if it meets a big need. Let's face it, every individual clinician or interprofessional team has existing ways that they find answers to questions. SMI Adviser offers a new way to cut through the clutter and get the best evidence personally delivered by a team of national experts. This new clinical tool—consultations—can improve efficiency and quality.

## Top 10 Reasons to Use This Service

- 1 It is completely FREE and confidential
- 2 You can ask any questions about any topics related to SMI
- 3 Questions can be short and focused or complex, multi-part questions
- 4 It takes less than two minutes to register and submit questions
- 5 All answers are delivered directly by our panel of national experts in SMI
- 6 Get your answers within one business day, many times sooner than that
- 7 The whole process takes place through an easy, secure online system
- 8 It provides direct access to experts in SMI without leaving your practice
- 9 Save tons of time trying to assess articles and links you find from online searches
- 10 Get a direct path to evidence-based answers and resources you can trust



www.SMIadviser.org

An APA and SAMHSA Initiative



## Leading the Way on Person-First Language

One of SMI Adviser's main assets is the diverse experience that our staff, partner organizations, and Clinical Expert Team bring to the initiative. They represent an array of professions, organizations, and disciplines. As a group we commit to promoting the use of person-first language.

Our team is proud to share several resources that you can share with your colleagues in order to solidify the use of person-first language. It is essential to minimize stigma around SMI and recognize the dignity that all individuals deserve.



- [Register for our interactive course](#) Words Matter: The Importance of Person First Language
- Read our Knowledge Base answers on [what is person-first language](#) and [what is the right language](#) to use when talking about people who have SMI
- See our policy on [Working Towards Person-Centered Language](#)

## SAMHSA Spotlight: Mental Health Technology Transfer Center

*This section highlights other programs and resources from the Substance Abuse and Mental Health Services Administration (SAMHSA)*



**MHTTC**

Mental Health Technology Transfer Center Network  
Funded by Substance Abuse and Mental Health Services Administration

The purpose of the MHTTC Network is technology transfer: disseminating and implementing evidence-based practices for mental health conditions into the field. This collaborative network supports resource development and dissemination, training and technical assistance, and workforce development for the mental health field. Their team works with systems, organizations, and treatment practitioners involved in the delivery of mental health services to strengthen their capacity to deliver effective evidence-based practices to individuals.

**LEARN MORE ABOUT THE MHTTC**



www.SMIadviser.org

An APA and SAMHSA Initiative



## New Learning Opportunities Coming Soon: Virtual Learning Collaboratives for Clinicians

As you plan for ways to educate your staff or yourself about evidence-based care for SMI, mark your calendar for all-new interactive and collaborative ways to learn from SMI Adviser. Our innovative Virtual Learning Collaboratives for clinicians are slated to begin in Fall 2019.

These learning collaboratives take a deep dive on specific topics around SMI. They are guided by members of our Clinical Expert Team and utilize real-world, project-oriented learning alongside colleagues for a deeper learning experience.



[LEARN MORE ABOUT LEARNING COLLABORATIVES](#)

SMI Adviser plans to offer an array of learning collaboratives over the coming months. Topics include:

- ✓ Addressing health needs of individuals with SMI
- ✓ Getting started with telemental health
- ✓ Improving psychiatric nursing assessment
- ✓ Integrating peer support into a team
- ✓ And more!

Visit the Learning Collaborative page on our website to watch a video that explains more about how these content-rich learning collaboratives work. You can also see the full list of upcoming topics and sign up to get an email when registration is open.

[WATCH THE VIDEO](#)



An APA and SAMHSA Initiative



## Get Involved Now: Help Us Raise Awareness

You can play a role in SMI Adviser too. This holds true whether you work for one of our 30+ national partner organizations, a large health system, or any other practice setting of any size.

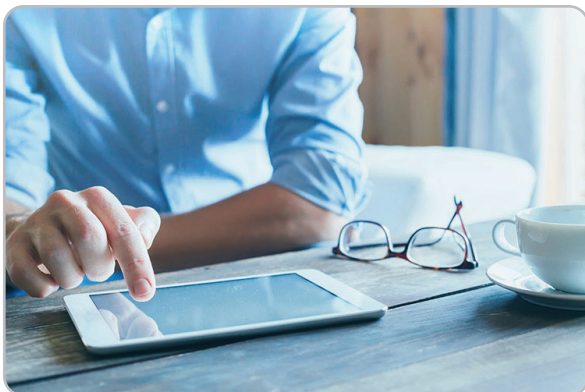
### 1. Share information about SMI Adviser's free services with colleagues.

Our mission is to advance the use of a person-centered approach to care that ensures people who have SMI find the treatment and support they need. Help us reach as many professionals as possible using our Partner Action Toolkit. This toolkit has everything you need to take action and share information about SMI Adviser: flyers, slides, logos, social media posts, and more.



SEE THE TOOLKIT

### 2. Direct any questions to our consultation service.



The treatment of SMI creates complex questions for everyone, from early-career clinicians to those with decades of experience. Refer your colleagues to the SMI Adviser consultation service so our clinical experts can find the best evidence-based answers to those questions. Any mental health professional can use this service at any time. It is free and confidential.

LEARN ABOUT CONSULTS



www.SMIadviser.org

An APA and SAMHSA Initiative

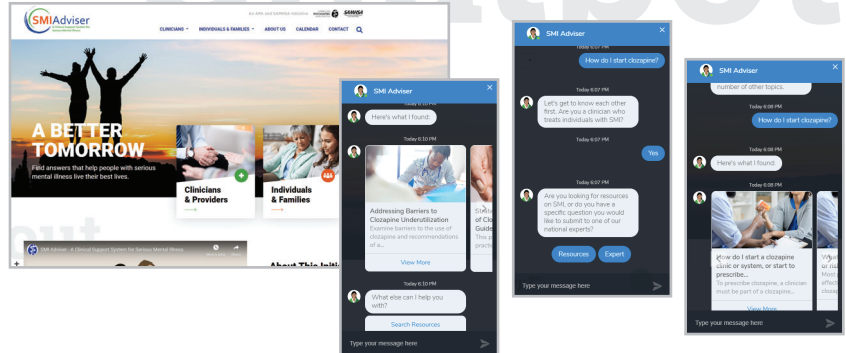


## New Features from SMI Adviser

In September 2019, SMI Adviser launched two exciting new features to help users access resources.

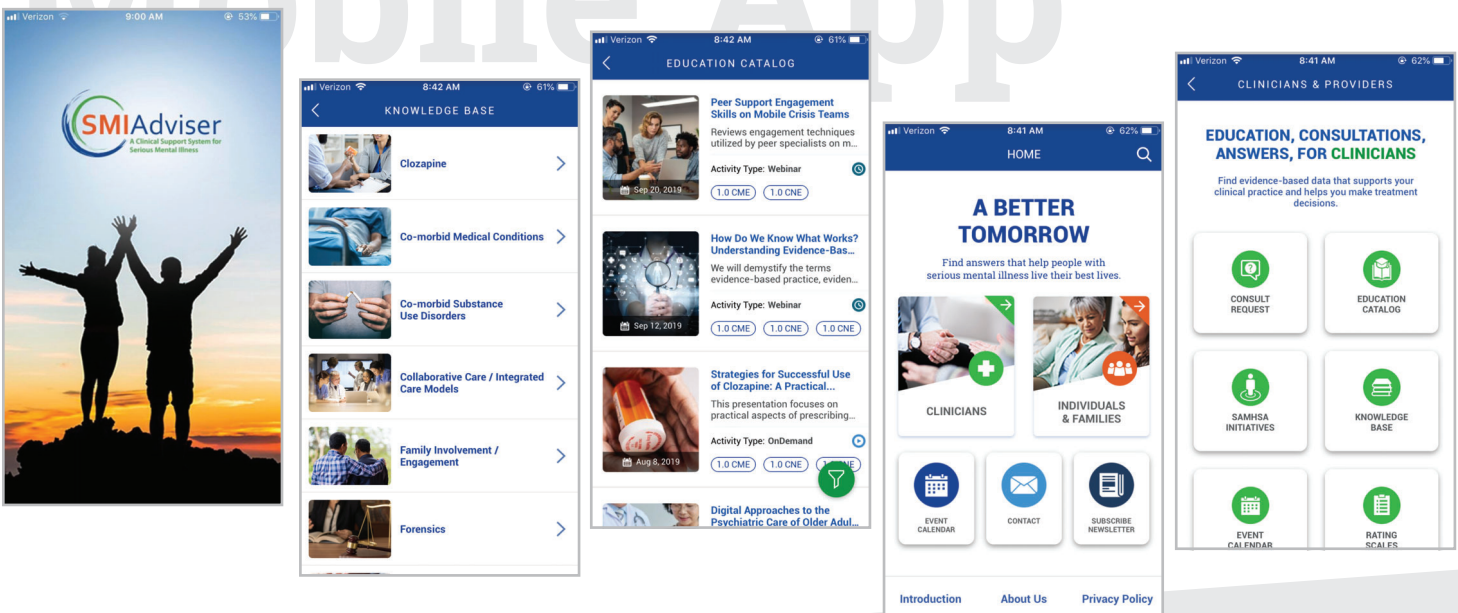
### SMI Adviser Chatbot

On our website [SMIAdviser.org](http://SMIAdviser.org), we introduced the **SMI Adviser Chatbot**. Simply tell her what you are looking for and she helps you drill down to that content fast.



### SMI Adviser App

We also released the **SMI Adviser App**. Download the app to your smartphone at [SMIAdviser.org/app](http://SMIAdviser.org/app). Our app puts all the features of our website right in the palm of your hand and has useful rating scales that you can use in clinical sessions. The app automatically scores the scales and interprets scores, which allows for immediate use of the information to guide care.







An APA and SAMHSA Initiative



## SMI Adviser Website Wins Awards

As the SMI Adviser team builds out its website, our primary goals are to offer users high standards of excellence in terms of design, content and ease of use.

We are very proud to have that hard work acknowledged. Recently, the Web Marketing Association recognized SMIadviser.org with two awards in its 2019 WebAwards Competition. The site received a Health Care Standard of Excellence award and a Non-Profit Standard of Excellence award.

The WebAward Competition includes expert judges from around the world who review websites across a variety of industry categories. The SMI Adviser team extends a big THANK YOU to our staff team, Clinical Expert Team, website development pros, partner organizations, and everyone who contributes to make this website and initiative a success.





www.SMIadviser.org

An APA and SAMHSA Initiative



## On the Road: 2019 Conferences

SMI Adviser launched its national marketing campaign at the National Council for Behavioral Health conference (NatCon 19) in April in Nashville, TN. In the months since, we exhibited and led conference sessions at other major conferences in the mental health field.

American Mental Health Counselors Association (AMHC) 2019 Conference

American Psychiatric Association (APA) 2019 Annual Meeting

American Psychological Association (APA) 2019 Convention

International Initiative for Mental Health Leadership (IIMHL) 2019 Leadership Exchange Network Meeting

Mental Health America (MHA) 2019 Annual Conference

National Association of State Mental Health Program Directors (NASMHPD) 2019 Annual Meeting

National Alliance on Mental Illness (NAMI) 2019 National Convention



## GRANT STATEMENT

Funding for this initiative was made possible (in part) by Grant No. 1H79SM080818-01 from SAMHSA. The views expressed in written conference materials or publications and by speakers and moderators do not necessarily reflect the official policies of the Department of Health and Human Services; nor does mention of trade names, commercial practices, or organizations imply endorsement by the U.S. Government.