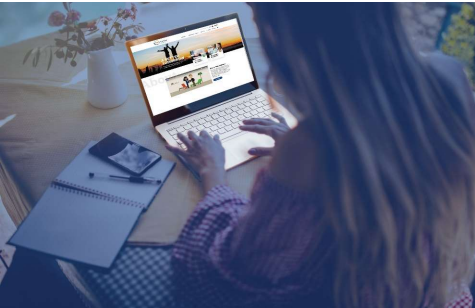


Welcome

Clozapine & LAI Virtual Forum

February 7, 2024 | 4:00 – 4:45 pm ET



The Clozapine & LAI Virtual Forum is a peer-to-peer, interactive dialogue between psychiatrists, nurse practitioners, and other prescribing clinicians.

It is informal, no registration required — just join our Zoom call and share your challenges and questions on the month's trending topic around either clozapine or LAIs.

TODAY'S TOPIC: Comparing Aripiprazole LAI Products

Moderators

Donna Rolin, PhD, APRN, PMHCNS-BC, PMHNP-BC

SMI Adviser Nursing Expert; University of Texas, Austin

Dr. Donna Rolin is Clinical Associate Professor and the Director of the Psychiatric Mental Health Nurse Practitioner program at the University of Texas with 23 years of experience in psychiatric nursing, including inpatient, community, forensic, and older adult settings.

Robert Cotes, MD

SMI Adviser Physician Expert; Emory University

Dr. Robert Cotes, MD, is an Associate Professor at Emory University School of Medicine in the Department of Psychiatry and Behavioral Sciences. He has interest in clozapine, characterizing persistent symptoms of schizophrenia, understanding cardiometabolic side effects of antipsychotic medications, and first episode psychosis.

Megan Ehret, PharmD, MS, BCPP

SMI Adviser Pharmacist Expert; University of Maryland, Baltimore

Dr. Megan Ehret is a Professor at University of Maryland School of Pharmacy in the Department of Practice, Sciences, and Health Outcomes Research and is Co-Director of the Mental Health Program. She is a Past-President of the American Association of Psychiatric Pharmacists. Her current interests include psychotropic medication adherence and the incorporation of the psychiatric pharmacist in practice.

Discussion Questions for Virtual Forum: Comparing Aripiprazole LAI Products

- We now have 3 Aripiprazole LAIs
 - With which of these LAIs are you familiar or have seen prescribed?
 - Which are you (or colleagues) prescribing and why?
 - Aripiprazole Monohydrate (monthly)
 - Aripiprazole Monohydrate (bimonthly)
 - Aripiprazole Lauroxil (Q4, 6, or 8 weeks)
- How do you select between the various Aripiprazole products?
- What are your thoughts on having this many such LAI agents available?

	Aripiprazole Monohydrate (monthly)	Aripiprazole Monohydrate (bimonthly)	Aripiprazole Lauroxil
Year approved	2013	2023	2015
Other indications	Bipolar disorder	Bipolar I maintenance	No
Injection sites	Deltoid or gluteal	Gluteal	Deltoid (441 mg dose) or gluteal
Needle gauge	21G, 22G, or 23G	21G or 22G	20G or 21G
Injection volume	2 mL (400 mg)	2.4 mL to 3.2 mL	1.6 to 3.9 mL
Injection frequency	Every 4 weeks	Every 8 weeks	Every 4 weeks (all doses), every 6 weeks (882 mg), or every 2 months (1064 mg)
Starting dose	400 mg	960 mg	441, 662, 882, or 1064 mg
Maintenance dose	300 or 400 mg (adjust for CYP2D6 or CYP3A4 issues)	720 or 960 mg	441, 662, 882, or 1064 mg (adjust for CYP2D6 or CYP3A4 issues)
Oral supplement	Yes-14 days	Yes- 14 days if patient is not switching from aripiprazole monohydrate monthly No-if patient is switching from aripiprazole monohydrate monthly	Yes- 21 days if Aristada Initio is not utilized No- if Aristada Initio is utilized, one 30 mg dose is required upon initiation
Reconstitution	Yes; dual-chamber syringe now available	No	No
Refrigeration	No	No	No
Observation	No	No	No



Aripiprazole- Aristada Initio[®]

- Prodrug of N-hydroxymethyl aripiprazole, which in turn is a prodrug of aripiprazole
- LinkeRx
- Nano-crystalline milled dispersion of aripiprazole lauroxil
- Increased rate of dissolution- enhancing bioavailability – faster time to therapeutic concentration
- Minimize the need for oral aripiprazole treatment overlap dosing:
 - 30 mg oral aripiprazole on day 1
 - Aristada Initio[®] 675 mg on day 1
 - Aristada[®] injection (441, 662, 882, 1062 mg) on same day as above or up to 10 days after

SMI ADVISER ASSETS ON LONG-ACTING INJECTABLES

Long-Acting Injectable Center of Excellence



The screenshot shows the SMI Adviser website. The header includes the SMI Adviser logo and navigation links: CLINICIANS, INDIVIDUALS & FAMILIES, OUR TOOLS, ABOUT US, CALENDAR, CONTACT, and a search icon. The main content area features a photograph of a healthcare provider in a white coat administering an injection to an elderly patient. To the right of the photo is the heading "Welcome to the Long-Acting Injectable (LAI) Center of Excellence (COE)". Below the heading is a paragraph describing the COE's mission and a bulleted list of resources: Live and on-demand webinars, Virtual Learning Collaboratives, Virtual Forums, Email listserv, On-demand consultations, Intensive consultation to sites or communities, and Clinical tips and resources. Further down, a paragraph identifies the leadership team and partners, and a final paragraph provides a link to the individual and family Knowledge Base.

Welcome to the Long-Acting Injectable (LAI) Center of Excellence (COE)

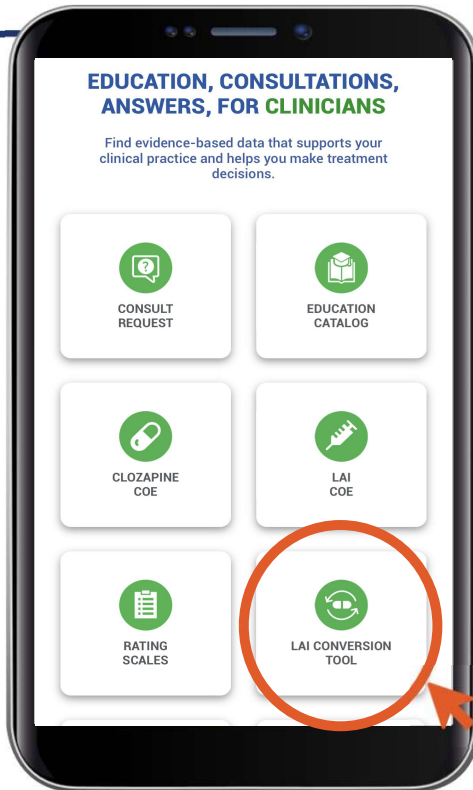
SMI Adviser created the LAI COE to promote the safe and effective use of LAIs. The ultimate goal of this effort is to improve the lives of individuals who have schizophrenia, schizoaffective, and bipolar disorders. The LAI COE provides clinicians with training opportunities, technical assistance, and vetted resources. These include:

- Live and on-demand webinars
- Virtual Learning Collaboratives
- Virtual Forums
- Email listserv
- On-demand consultations
- Intensive consultation to sites or communities
- Clinical tips and resources

The LAI COE is led by SMI Nursing Expert, Donna Rolin, PhD, APRN, SMI Adviser Physician Expert, Robert Cotes, MD, and SMI Adviser content partner, National Association of State Mental Health Program Directors (NASMHPD), and supported by members of the LAI Workgroup.

For individual and family resources on using long-acting injectables, visit the individual and family [Knowledge Base](#).

LAI DOSE CONVERSION TOOL

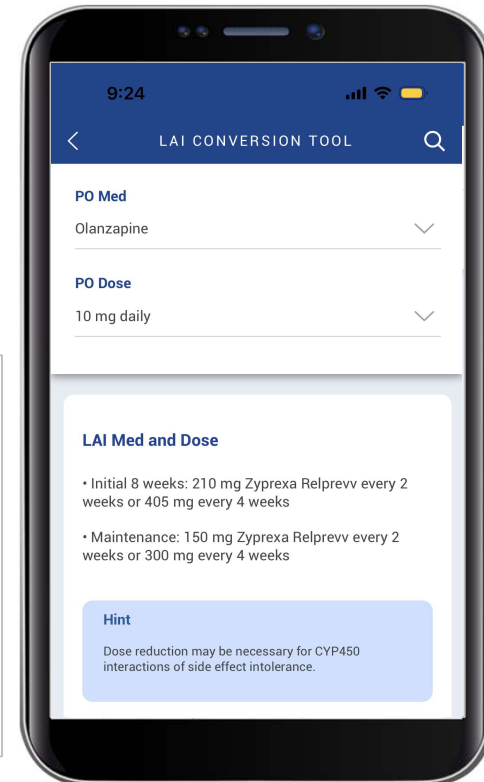


LAI Med and Dose

- Initial 8 weeks: 210 mg Zyprexa Relprevv every 2 weeks or 405 mg every 4 weeks
- Maintenance: 150 mg Zyprexa Relprevv every 2 weeks or 300 mg every 4 weeks

Hint

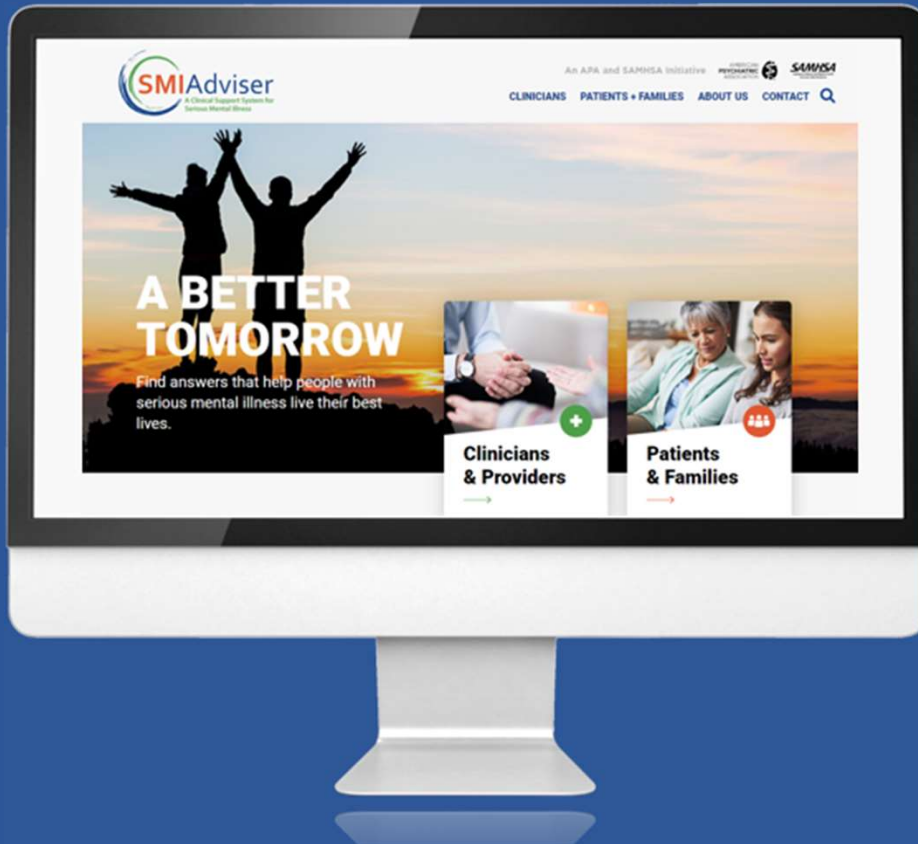
Dose reduction may be necessary for CYP450 interactions of side effect intolerance.



Download at SMIAdviser.org/app

FEEDBACK

Please help us improve the Clozapine & LAI Virtual Forum by completing this survey:
<http://smiadvise.org/forumfeedback>



Pre-submit Cases

www.smiadvise.org/vfcases

UPCOMING VIRTUAL FORUM

3/6/24 @ 4:00-5:00 PM ET

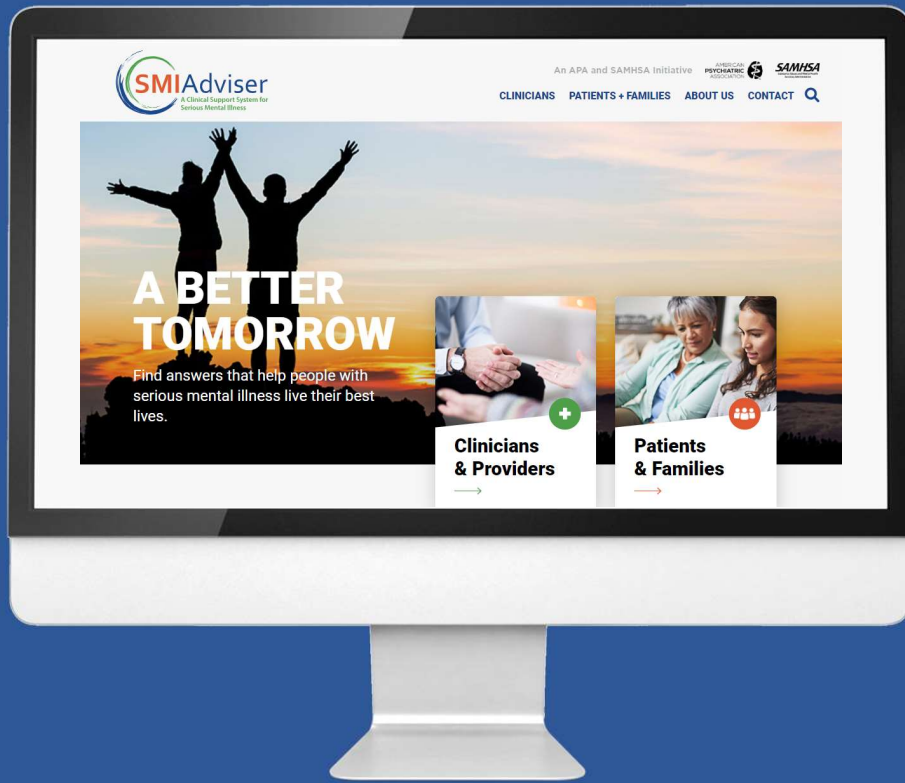
Clozapine Topic

For additional questions and resources – join the Clozapine and LAI Centers of Excellence Exchange Community

www.smiadvise.org/cloz_lai_signup

FEEDBACK

Please help us improve the Clozapine & LAI Virtual Forum by completing this survey:
<http://smiadvise.org/forumfeedback>



Pre-submit Cases

www.smiadvise.org/vfcases

UPCOMING VIRTUAL FORUM

3/6/24 @4:00-5:00 PM ET

Clozapine Topic

For additional questions and resources – join the Clozapine and LAI Centers of Excellence Exchange Community

- www.smiadvise.org/cloz_lai_signup

An APA and SAMHSA Initiative

